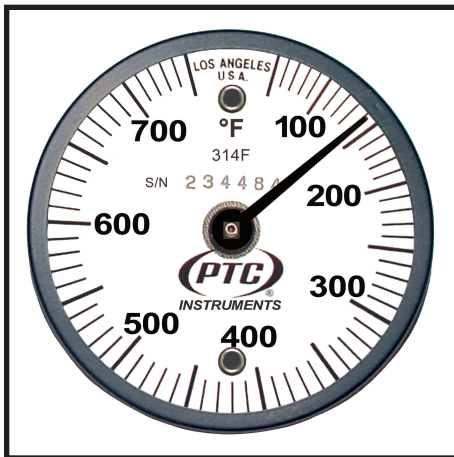




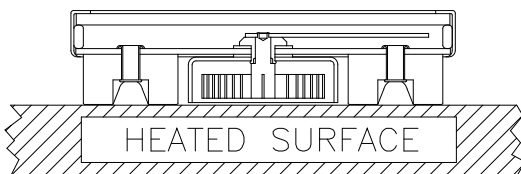
# Dual Magnet Mount Surface Thermometers



Made In U.S.A.



Model 314F shown actual size, 2" O.D.



Cutaway view of surface thermometer

| Model | Range            | Divisions |
|-------|------------------|-----------|
| 312F  | 0°F to 250°F     | 2°F       |
| 313F  | 0°F to 500°F     | 5°F       |
| 314F  | 50°F to 750°F    | 10°F      |
| 315F  | 0°F to 150°F     | 1°F       |
| 330F  | -100°F to +160°F | 2°F       |
| 312C  | -20°C to +120°C  | 1°C       |
| 313C  | -20°C to +250°C  | 2°C       |
| 314C  | 10°C to 400°C    | 5°C       |
| 315C  | -15°C to +65°C   | 1°C       |
| 330C  | -70°C to +70°C   | 2°C       |

- **PTC® Quality -- Made in the U.S.A.**
- **Accuracy of  $\pm 2\%$  of Full Scale Range**
- **NIST Certification Available**
- **Every Unit Individually Calibrated**
- **Dual Scale Models Available**
- **Single or Dual Max-Min Hands Available**
- **Dual Magnet Mount Standard -- Four Magnet or Tab Mount Optional**

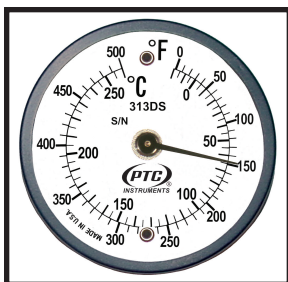
**THE** best bimetal surface thermometer on the market for over sixty years. PTC®'s surface thermometers are unrivaled for their combination of accuracy, quality, versatility, and economy. Manufactured from the finest materials, these instruments will continue to give accurate readings for many years. Each thermometer is individually calibrated and serialized. Our thermometers have an accuracy of  $\pm 2\%$  of full scale range and are backed by a one year warranty. Certification service using NIST traceable standards and in accordance with ANSI/NCSL Z540-1 is available for all of these units.

## SPECIFICATIONS

1. Accuracy .....  $\pm 2\%$  of full scale range.
2. Time constant ..... from 0.06 to 1 minute.  
(depending on the range)
3. Dimensions:  
Diameter ..... 2 in. (5.1 cm).  
Height ..... 1/2 in. (1.3 cm).
4. Weight ..... 1-1/2 oz. (43 g).
5. Shipping weight ..... 1 lb. (454 g).
6. Dual Scale models available ..... see reverse.
7. Ancillary hand(s) ..... see reverse.
8. Tab Mount or 4 Magnet Mount ..... see reverse.



## Dual Scale Magnet Mount Surface Thermometers



Same great features as the Dual Magnet Surface Thermometers, but with °F & °C dual scale dials

| MODEL        | RANGES °F & °C                  | DIV.         |
|--------------|---------------------------------|--------------|
| <b>312DS</b> | 0°F to 250°F<br>-20°C to +120°C | 5°F<br>2°C   |
| <b>313DS</b> | 0°F to 500°F<br>-20°C to +260°C | 10°F<br>5°C  |
| <b>314DS</b> | 50°F to 750°F<br>10°C to 400°C  | 10°F<br>10°C |
| <b>315DS</b> | 0°F to 150°F<br>-20°C to +65°C  | 2°F<br>1°C   |

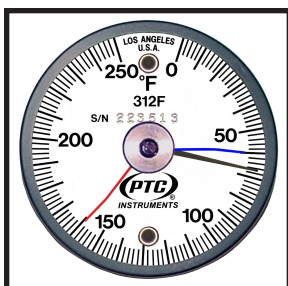
## Single or Max-Min (Dual) Ancillary Hands

### Single Ancillary Hand

This handy, resettable peak reading hand is available as an accessory on PTC's Dual Magnet Mount, Dual Scale, 4 Magnet Mount, and Tab Mount surface thermometers. The ancillary hand is reset by simply turning the reset knob. A magnetic clutch holds the hand in place at either the maximum **or** minimum temperature reached during a cycle.

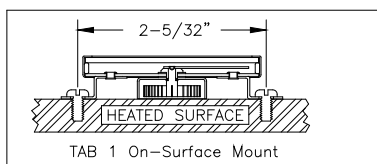
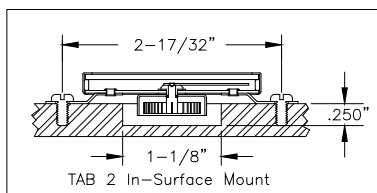
### Max-Min (Dual) Ancillary Hands

Max-Min hands are available on PTC's Dual Magnet Mount, Dual Scale, 4 Magnet Mount, and Tab Mount surface thermometers. This accessory has been designed to provide the user an easy way to obtain maximum **and** minimum temperatures for a given cycle. The hands are easily reset before each temperature cycle by using the reset knob and magnetic wand (Part No. 314.5MM).



Model 312FMM with Max-Min Ancillary Hands shown

## Tab Mount Surface Thermometers



### Tab Mounted Surface Thermometers

Two types of tabs are available for these thermometers. Tab 1 is for on-surface mounting and Tab 2 for in-surface mounting. The drawings show both methods of mounting. For in-surface mounting, a hole 1-1/8" in diameter by 1/4" deep is machined in the part to be measured. Pilot holes also need to be drilled for mounting screws. The tabs are provided with holes for the screws. When ordering, please specify whether Tab 1 or Tab 2 mounting is required.